



Fuladh Alamin

# COMPANY PROFILE

+966 138429414 

sales@ameensteel.com 

www.ameensteel.com 



رؤية  
VISION  
2030  
المملكة العربية السعودية  
KINGDOM OF SAUDI ARABIA



Fuladh Alamin

# Hi There!

Fuladh Alamin Est. For Trading Company stands as a trusted leader in the supply and distribution of Carbon Steel and Stainless-Steel Pipes, Fittings, Sheets, Aluminum Sheets and Profiles, Alloy Steel, Mild Steel Structural Materials (MS Angles, MS Channels, MS Beams, MS Plates, MS Tubes, GI Plain Sheets Etc...) Valves, and Custom Fabrication Works.

[www.ameensteel.com](http://www.ameensteel.com)



Fuladh Alamin

# Table Of Contents

- About Company
- Vision & Mission
- Quality Policy
- Our Products
- Executed Projects
- Certificates
- Vision 2030
- Contact Us

[www.ameensteel.com](http://www.ameensteel.com)

# About Company

Fuladh Alamin Est. For Trading Company stands as a trusted leader in the supply and distribution of Carbon Steel and Stainless-Steel Pipes, Fittings, Sheets, Aluminum Sheets and Profiles, Alloy Steel, Mild Steel Structural Materials (MS Angles, MS Channels, MS Beams, MS Plates, MS Tubes, GI Plain Sheets Etc...) Valves, and Custom Fabrication Works.

With a strong presence across diverse sectors such as Oil & Gas, Petrochemical, Dairy Processing, Desalination, Industrial Manufacturing, Commercial Developments, and Major Infrastructure Projects, we cater to the dynamic demands of both local and international markets.

Through strategic partnerships with the world's most reputable manufacturers and the support of our technically proficient and customer-focused team, Fuladh Alamin Steel delivers superior quality products, innovative solutions, and unmatched service excellence.

Our commitment to reliability, precision, and customer satisfaction has established us as a preferred partner for industries seeking durability, performance, and value in every project we support.





Fuladh Alamin

## Vision



To be a globally trusted steel solutions provider, recognized for quality, reliability, and innovation, supporting the growth of industries and infrastructure through durable, high-performance materials and engineering excellence.

## Mission



To supply high-quality carbon steel, stainless steel, aluminum, alloy steel products, and custom fabrication solutions that meet international standards. We are committed to delivering value through strategic partnerships, technical expertise, customer-focused service, and timely execution, while building long-term relationships based on trust, precision, and performance Functions.



Fuladh Alamin

# Quality Policy

## **"Reliability That Holds, Quality That Leads."**

FULADH AL AMIN is a supplier of pipes, fittings, flanges, valves, and structural materials serving the Oil & Gas, Petrochemical, Food Industries, Desalination Plants, and Commercial & Infrastructural Construction sectors.

We are committed to delivering quality products and services that meet customer, statutory, and regulatory requirements, while striving to exceed customer expectations.

### **We Commit To:**

- Understanding customer needs and ensuring timely delivery of quality products and services.
- Maintaining and continually improving an effective Quality Management System in accordance with ISO 9001:2015
- Applying risk-based thinking and monitoring performance to drive continual improvement
- Reducing environmental impact through responsible and efficient operations
- Providing a safe and healthy working environment for employees, visitors, and customers

This policy is communicated, implemented, and periodically reviewed to ensure its continued suitability and effectiveness.



Fuladh Alamin

# Products Portfolio



Material	Construction	Standard
<b>Carbon Steel</b>	SSAW LSAW EFW ERW	<b>API 5L , 01-SAMSS-035</b>
Specification for Line pipe.		
<b>Carbon Steel</b>	SSAW LSAW EFW ERW	<b>ASTM A106 , 01-SAMSS-043</b>
Standard Specification for Seamless Carbon Steel Pipe for High-Temperature Service1.		
<b>Carbon Steel</b>	SSAW LSAW EFW ERW	<b>ASTM A53</b>
Standard Specification for Pipe, Steel, Black and Hot-Dipped, Zinc-Coated, Welded and Seamless.		



Fuladh Alamin

Material	Construction	Standard
<b>Carbon Steel</b>	SSAW LSAW EFW ERW	<b>ASTM A333 , 01-SAMSS-043</b>
Standard Specification for Seamless and Welded Steel Pipe for Low-Temperature Service1.		
<b>Stainless Steel</b>	SSAW LSAW EFW ERW	<b>ASTM A312</b>
Standard Specification for Seamless, Welded, and Heavily Cold Worked Austenitic Stainless Steel Pipes.		
<b>Stainless Steel</b>	SSAW LSAW EFW ERW	<b>01-SAMSS-046</b>
Stainless steel pipes.		



Fuladh Alamin

# Products Portfolio



## FITTINGS

Material	Construction	Standard
<b>Carbon Steel</b>	Forged	<b>ASTM A105 and ASM A 350</b>
Standard Specification for Carbon Steel Forgings for Piping Applications.		
Standard Specification for Carbon and Low Alloy Steel Forgings, Requiring Notch Toughness Testing for Piping Components.		
<b>Carbon Steel</b>	Butt weld – Seamless & Welded	<b>ASTM A234</b>
Standard Specification for Piping Fittings of Wrought Carbon Steel and Alloy Steel for Moderate and High Temperature Service.		



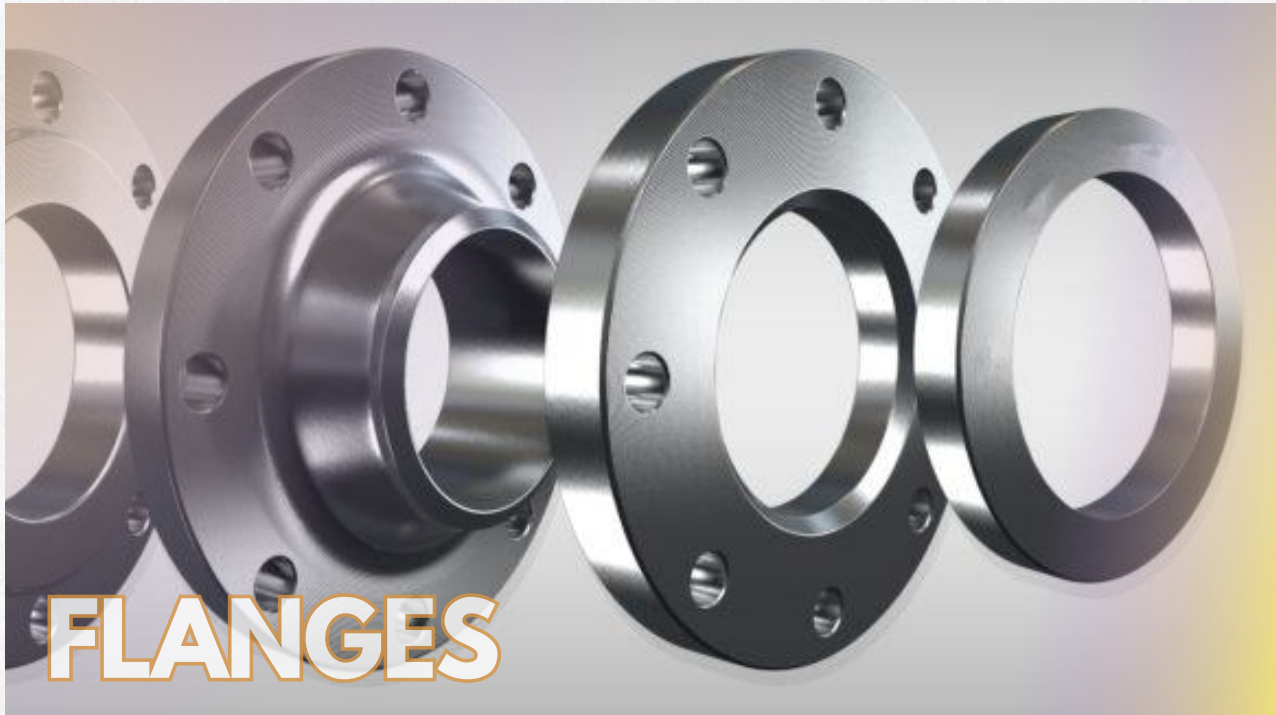
Fuladh Alamin

Material	Construction	Standard
<b>Carbon Steel</b>	Butt weld – Seamless & Welded	<b>ASTM A420</b>
Standard Specification for Piping Fittings of Wrought Carbon Steel and Alloy Steel for Low-Temperature Service.		
<b>Carbon Steel</b>	Butt weld – Seamless & Welded	<b>ASTM A860</b>
Standard Specification for Wrought High Strength Low-Alloy Steel Butt-Welding Fittings.		
<b>Carbon Steel</b>	Butt weld – Seamless & Welded	<b>MSS SP 75</b>
Specification of high test, wrought, butt weld fittings.		
<b>Carbon Steel</b>	Butt weld – Seamless & Welded	<b>02-SAMSS-005</b>
Butt welding pipe Fittings.		
<b>Stainless Steel</b>	Forged	<b>ASTM A182</b>
Standard Specification for Forged or Rolled Alloy and Stainless Steel Pipe Flanges, Forged Fittings, and Valves and Parts for High-Temperature Service.		
<b>Stainless Steel</b>	Butt weld – Seamless & Welded	<b>ASTM A403 , 02-SAMSS-013</b>
Standard Specification for Wrought Austenitic Stainless Steel Piping Fittings		



Fuladh Alamin

# Products Portfolio



## FLANGES

Material	Construction	Standard
<b>Carbon Steel</b>	Forged	<b>ASTM A105</b>
Standard Specification for Carbon Steel Forgings for Piping Applications.		
<b>Carbon Steel</b>	Forged	<b>ASTM A350</b>
Standard Specification for Carbon and Low-Alloy Steel Forgings, Requiring Notch Toughness Testing for Piping Components.		
<b>Stainless Steel</b>	Forged	<b>ASTM A182</b>
Standard Specification for Forged or Rolled Alloy and Stainless Steel Pipe Flanges, Forged Fittings, and Valves and Parts for High-Temperature Service		



Fuladh Alamin

Material	Construction	Standard
<b>Stainless Steel</b>	Forged	<b>02-SAMSS-011</b>
Forged steel and alloy flanges.		



Material	Construction	Standard
<b>Stainless Steel</b>	Plate, Sheet, Strip	<b>ASTM A240</b>
Standard Specification for Chromium and Chromium-Nickel Stainless Steel Plate, Sheet, and Strip for Pressure Vessels and for General Applications.		
<b>Aluminum Plain &amp; Checkered</b>	—	<b>Alloy 1050 &amp; 3003 , 1100 and all other alloys</b>
Aluminum Alloy A1050 & A3003 H14 & H24. Aluminum Checkered.		



Fuladh Alamin

# Products Portfolio

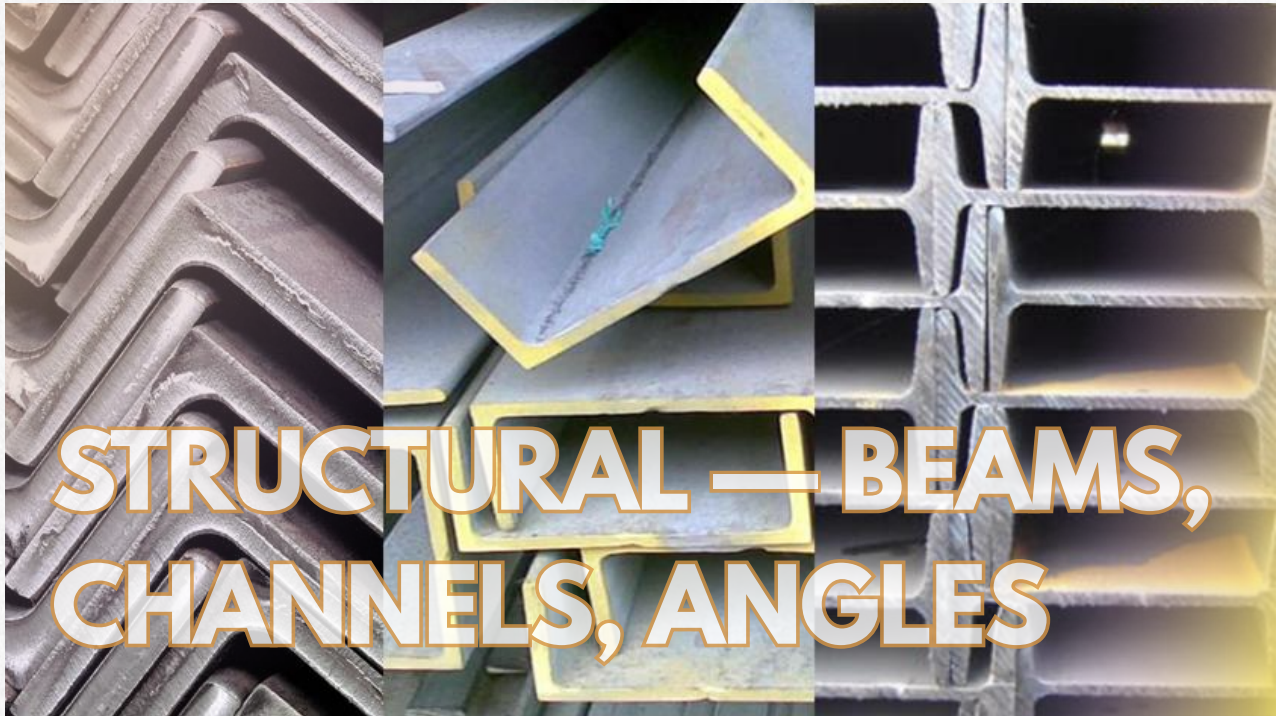


Material	Construction	Standard
<b>Stainless Steel – Bars</b>	—	<b>ASTM A276</b>
Standard Specification for Stainless steel Bars & Shapes.		
<b>Stainless Steel – Tubes</b>	—	<b>ASTM A269</b>
Standard Specification for seamless and welded Austenitic. Stainless Steel Tubing for General Service.		



Fuladh Alamin

# Products Portfolio



Material	Construction	Standard
<b>Mild Steel / Carbon Steel</b>	Channel	<b>ASTM A-36, S275 JR, S355 JR, A572 Gr 50, A992 Gr 50, SS400</b>
American / European structural steel – Channels.		
<b>Mild Steel / Carbon Steel</b>	Plate	<b>ASTM A-36, S275 JR, S355 JR, A572 Gr 50, ASTM A Gr 60/70, SS400</b>
American / European structural steel – Plates.		
<b>Mild Steel / Carbon Steel</b>	Round Bars	<b>A36, C45, 4140, 4340H</b>



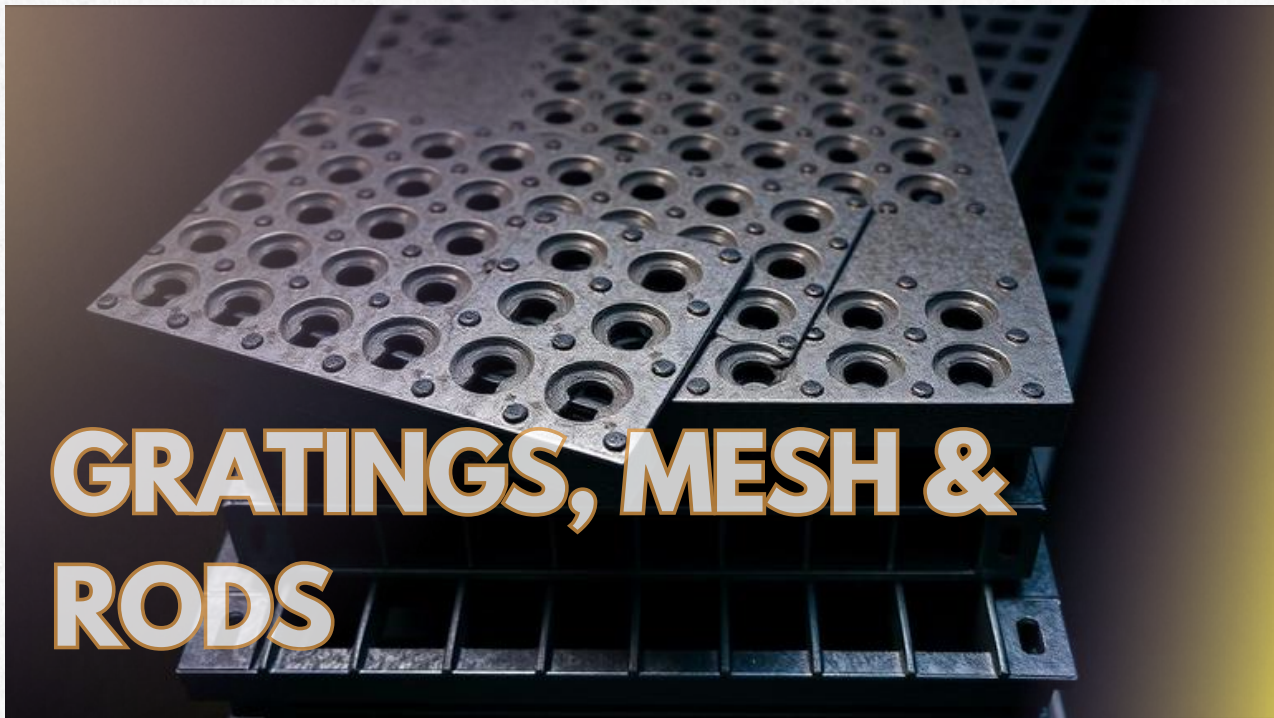
Fuladh Alamin

Material	Construction	Standard
Round bars for structural and mechanical applications.		
<b>Galvanized Steel</b>	Structural Steel	<b>A653, A123, A153, G90 Etc.</b>
Hot-dip galvanized structural steel sections.		
<b>Mild Steel / Carbon Steel</b>	RHSS 	<b>ASTM A-36, S275 JR, S355 JR, A572 Gr 50, A992 Gr 50, SS400</b>
Rectangular hollow structural sections.		
<b>Mild Steel / Carbon Steel</b>	HSS 	<b>ASTM A-36, S275 JR, S355 JR, A572 Gr 50, A992 Gr 50, SS400</b>
Hollow structural sections.		
<b>Mild Steel / Carbon Steel</b>	Beam 	<b>ASTM A-36, S275 JR, S355 JR, A572 Gr 50, A992 Gr 50, SS400</b>
Structural I-beams and H-beams.		
<b>Mild Steel / Carbon Steel</b>	Angle 	<b>ASTM A-36, S275 JR, S355 JR, A572 Gr 50, A992 Gr 50, SS400</b>
Equal and unequal angles.		



Fuladh Alamin

# Products Portfolio



## GRATINGS, MESH & RODS

Material	Construction	Standard
<b>Mild Steel / Carbon Steel</b>	Plain Gratings	<b>A 36, A 1011</b>
Plain bar gratings for industrial flooring and walkways.		
<b>Mild Steel / Carbon Steel</b>	Serrated Gratings	<b>A 36, A 1011</b>
Serrated bar gratings for anti-slip applications.		
<b>Mild Steel / Carbon Steel</b>	Expanded Material	<b>A 36, A 1011</b>



Fuladh Alamin

Material	Construction	Standard
Expanded metal sheets and panels.		
<b>Mild Steel / Carbon Steel</b>	Mesh	<b>A 36, SS 400 JIS</b>
Woven and welded structural mesh.		
<b>Carbon</b>	CS Rods – Insulating Material	<b>American / European</b>
Carbon rods for insulating applications.		
<b>Teflon</b>	Teflon Rods – Insulating Material	<b>American / European</b>
Teflon rods for insulating applications.		

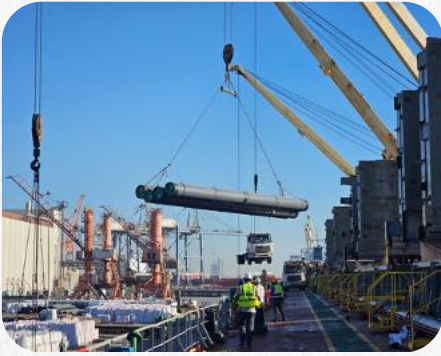
**“THE NAME OF TRUST  
FULADH ALAMIN”**



Fuladh Alamin

## Executed Projects

- Rabigh 10KM Gas Pipeline
- Rahigh-2 2KM Pipeline
- PP10 Riyadh Project 14km Pipeline with FBE coating





Fuladh Alamin





Fuladh Alamin





Fuladh Alamin

# CR Certificates



وزارة التجارة  
Ministry of Commerce

## Commercial Registration Certificate

fuladh alamin Establishment For  
Trading

- National Number : 7042702642
- Release date : 26/11/2024
- Entity Type : Establishment
- Status : Active

Basic data of the commercial register



7042702642

1900  
mc.gov.sa

@XfD  
mcgovsa

# National Address

Proof Number 1061029547 رقم الإثبات  
Original Date 26/1/2025 تاريخ الإصدار  
Expiration Date 25/7/2025 تاريخ الانتهاء



## إثبات عنوان Address Proof

### Address Holder Details

### بيانات صاحب العنوان

Name مؤسسه فولاذ الأمين للتجارة الاسم  
Customer Acc. 3 1 3 3 0 9 8 3 7 0 4 رقم الحساب  
Reg. Date 26/1/2025 تاريخ التسجيل

### Address Details

### تفاصيل العنوان

Short Address E M J B 6 7 7 2 العنوان المختصر  
Building No. Street رقم المبنى الشارع  
6 7 7 2 Al Qunfuda القنفذة 6 7 7 2  
Secondary No. District الرقم الفرعي الحي  
4 3 2 1 Al Fayha Dist. حي الفيحاء 4 3 2 1  
Postal Code الرمز البريدي  
3 2 4 4 1 3 2 4 4 1  
City المدينة  
DAMMAM الدمام  
Kingdom of Saudi Arabia المملكة العربية السعودية



للتحقق To Verify

<https://proof.address.gov.sa/VerifyProofNA.aspx>

تم إصدار هذا الإثبات إلكترونياً ولا يتطلب التوقيع عليه

تم إصدار هذا الإثبات بناءً على طلب الموضح أعلاه، ويحظر قطعياً تقليده أو إدخال أي تعديلات عليه سواء بالإضافة أو الحذف، ويعد الإثبات لغيماً إذا شابه شيء من ذلك، كما يعرض صاحبه للمساءلة القانونية.

This proof has been issued electronically and does not require a signature

This proof has been issued upon the request of the above-named, and it is absolutely prohibited to imitate it or make any modifications to it, whether by addition or deletion, and the proof is considered void if it is marred by something, and its owner is subject to legal accountability.

رؤية  
VISION  
2030


المملكة العربية السعودية  
KINGDOM OF SAUDI ARABIA






Fuladh Alamin

# Get in touch

 Building 6772, Al Qunfuda. Al Fahya Distt Dammam 32441

**Kingdom of Saudi Arabia**

 +966 138429414

 [sales@ameensteel.com](mailto:sales@ameensteel.com)

 [www.ameensteel.com](http://www.ameensteel.com)



ISO 9001:2015  
BUREAU VERITAS  
Certification

